

EXPANSION CARD OPZ1/A
for
Navicontrol Gold Serie Autopilots

Installation Guide



NAVICONTROL s.r.l.
Via Comparini, 39/24 - 55049 VIAREGGIO (LU) - ITALY
tel. +39 0584 384144 fax. +39 0584 384447

HARDWARE / SOFTWARE INSTALLATION

This interface allows you to expand the features of your Navicontrol autopilot. It can be installed on every 'gold serie' autopilot by the following instructions:.

- Switch off the main supply.
- Open the Processor Box.
- Insert the card and fix it by the three supplied screws.
- Connect all the expansions as explained hereinafter.
- Close the Processor box.
- Switch on the main supply.
- Enter the install menu and enable them.
- Exit the install menu.

WARNING:

On the first installation, all the new functions are disabled. You must enable ONLY the ones really connected and disable the others!

For the AP3003gold, AP303gold and AP203gold autopilots

To enter the SOFTWARE install menu of this card, you have to hold pressed **STBY** and **SET** for 3 seconds at least, release the keys and press **AUTO** to enter the expansion card menu.

Now, you can select the functions by pressing **SET** and change the values using **◀** or **▶**.

To exit the install menu, press **STBY**.

For the AP103gold autopilot

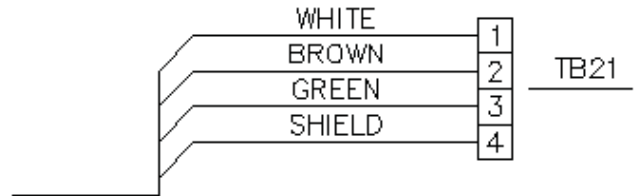
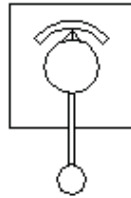
To enter the SOFTWARE install menu of this card, you have to hold pressed **☀** for 5 seconds at least, release the keys and press **AUTO** to enter the expansion card menu.

Now, you can select the functions by pressing **☀** and change the values using **◀** or **▶**.

To exit the install menu, press **STBY**.

TB21 FOLLOW-UP 1

FOLLOW-UP
1

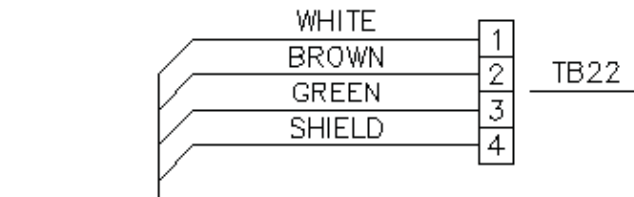
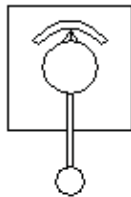


This connector interfaces the autopilot to the first Navicontrol FOLLOW-UP. The install function is named **FOLLOWUP 1** and the valid values are:

- **OFF** (not present)
- **FU A** (follow-up 'A' type, with zero hysteresis)
- **FU B** (follow-up 'B' type, without zero hysteresis)

TB22 FOLLOW-UP 2

FOLLOW-UP
2



This connector interfaces the autopilot to the second Navicontrol FOLLOW-UP. The install function is named **FOLLOWUP 2** and the valid values are:

- **OFF** (not present)
- **FU A** (follow-up 'A' type, with zero hysteresis)
- **FU B** (follow-up 'B' type, without zero hysteresis)

TB23 GYRONAV

GYRONAV



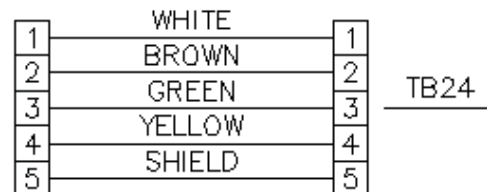
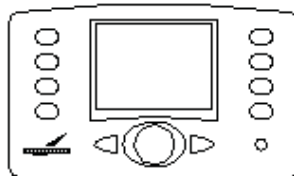
This connector interfaces the autopilot to the Navicontrol GYRONAV.

The install function is named **GYRONAV** and the valid values are:

- **OFF** (not present)
- **ON** (enabled)

TB24 CONTROL UNIT 3

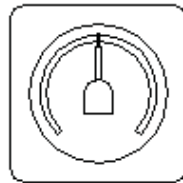
CONTROL
UNIT
3



This connector interfaces the autopilot to the third Navicontrol CONTROL UNIT.
This function is always ENABLED: it means that when you connect the device, it starts working immediately.

TB25 RUDDER INDICATOR 3

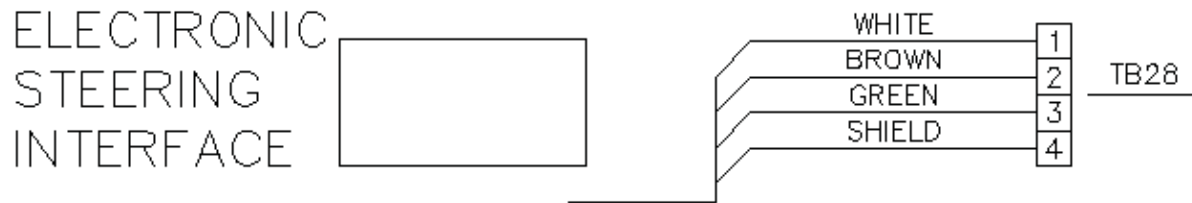
RUDDER
INDICATOR
3



This connector interfaces the autopilot to the third Navicontrol ANALOG RUDDER INDICATOR.

This function is always ENABLED: it means that when you connect the device, it starts working immediately.

TB28 ELECTRONIC STEERING



This connector interfaces the autopilot to the Navicontrol ELECTRONIC STEERING INTERFACE used by the electronic steering systems.

The install function is named **ACTUATOR** and the valid values are:

- **OFF** (not present)
- **EA n** (electronic actuator type A, 40 degrees full scale, normal output)
- **EA r** (electronic actuator type A, 40 degrees full scale, reverse output)
- **EB n** (electronic actuator type B, 25 degrees full scale, normal output)
- **EB r** (electronic actuator type B, 25 degrees full scale, reverse output)

USING THE NEW FUNCTIONS

FOLLOW-UP

For the AP3003gold autopilot.

When the hardware/software installation is accomplished, you can use it by entering the **FOLLOW UP** mode and pressing the **FW-UP** key. You can use, at the same time, the Control Unit knob or the external follow-up/s simply turning them: the ones you turn, is the active device.

Remember: when you have finished to use the follow-up/s, press **STBY** to exit the **FOLLOW UP** mode and release the control on the rudder.

For the AP303gold, AP203gold and AP103gold autopilots.

When the hardware/software installation is accomplished, you can use it by entering the **FOLLOW UP** mode and turning the external follow-up/s while you are in STANDBY mode. The external follow-up/s is not active in the others mode (AUTO, NAV, etc.).

Remember: when you have finished to use the follow-up/s, press **STBY** to exit the **FOLLOW UP** mode and release the control on the rudder.

GYRONAV

When the hardware/software installation is accomplished, this rate sensor is always active improving the response of the magnetic compass (FGX60 or FGX90).

ELECTRONIC STEERING

When the hardware/software installation is accomplished, this output is always active and it does not determine a relevant change in using the autopilot.

Remember that the indication of the rudder position (on the Control Unit and on the analog rudder indicator), is simulated: the true position is the one visualized by the Electronic Steering System.